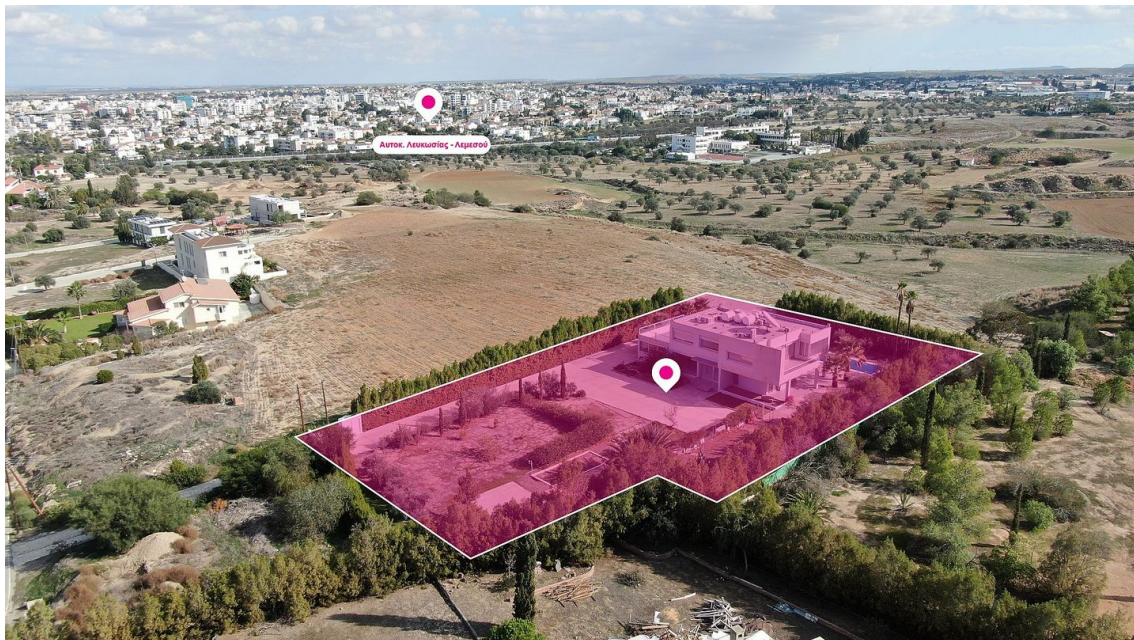


# Luxurious mansion in Latsia, Nicosia

**FOR SALE - € 1,200,000 EUR**



<https://www.mayfaircyprus.net/p/241152>

Prop No. **241152**  
 City: **Nicosia**  
 Area: **Latsia**  
 Bedrooms: **5 Bedrooms**  
 Bathrooms: **5 Baths**  
 Covered area: **70 m<sup>2</sup>**  
 Plot: **3345 m<sup>2</sup>**  
 Title deeds: **Yes**  
 Property Type: **Detached**  
 Condition: **Resale**

When privacy, luxury and ample of space is what you are looking for, look no further.

This spectacular two storey mansion is built in one of the most up and coming areas in Latsia, Nicosia, just a few meters away to the senior school, the Cyprus Educational Institute, the motorway and Nicosia city center.

The property sits within a huge land area of approximately 3.345 sq.m. and offers, amongst others, a swimming pool, covered parking spaces, a BBQ area, a fireplace, a jacuzzi and many other features.

The ground floor of the house consists of an entrance hall, an open plan living and dining room with a fireplace, a living room, a guest toilet, a kitchen with a sitting area, a maid's room with an en-suite bathroom and a staircase leading to the 1st floor.

The 1st floor consists of a sitting room, a laundry room, 4 bedrooms all of which offer en-suite bathrooms while the master bedroom offers an en-suite bathroom with jacuzzi, a shower and a walk-in closet, and 3 large uncovered verandas.

Furthermore the house offers a covered garage with an automatic door, a swimming pool of approximately 68 sq.m., a barbecue area and a landscaped yard.

The property falls within Zone Kα8, with a building coefficient of 60%, coverage of 35%, and permission for 2 floors (8.3m) of construction.

## Property features

- Fire Place

## Mayfair Properties

Corner of 1 Arch Makariou III & Gr Afxentiou Ave.  
 Shop 7, Akamia Centre, 6017, Larnaca, Cyprus  
 Tel: +357 248 187 30< Fax: +357 248 187 740  
 E-mail: [info@mayfaircyprus.com](mailto:info@mayfaircyprus.com)  
 Website: [www.mayfaircyprus.com](http://www.mayfaircyprus.com)



